

KI 6700 Series

Handheld Optical Time Domain Reflectometer

Optical Communications Test Applications

- Length measurement
- Tier 2 testing
- Splice loss verification
- Optical network verification
- Active Network / FTTH PON testing option
- SMF and MMF application



Revision 9

The reliable, compact and high performance KI 6700 series handheld OTDR is for characterizing the loss and length of fibre, certifying and fault finding fibre optic cable systems.

In addition to the basic OTDR functions, KI 6700 series have a variety of enhanced capabilities such as automatic multiple wavelength testing, file save to a USB flash drive, and advanced cursor placement.

Handheld, fully featured and ease of use summarise the advantage of KI 6700 series OTDR.

Features

- Functions as OTDR and Laser source
- Changeable optical adaptor
- Multiple wavelength testing
- SMF Dynamic range: up to 43 dB
- MMF Dynamic range: up to 30 dB
- Low SMF OTDR attenuation/event dead zone
- Belcore/Telcordia GR-196 SOR type 1, 1.1 & 2 format compliance.
- Large and bright high contrast 4.3" TFT screen
- USB-B port for external devices connection
- USB-A port for flash memory stick
- Small size and weight (1.5 kg/3.3 lb with the battery)
- Up to 9 hours operation with internal Li-Ion battery
- Rugged metal case with protective silicone overlays
- Advanced and automatic measurement modes cater for the experienced and beginner user
- 1000 traces for the internal memory
- 2 years warranty

KI 6700 Series – Handheld Optical Time Domain Reflectometer

OPTICAL SPECIFICATIONS

Parameters	Value
SMF OTDR	KI67xx-1
λ tolerance	$\lambda \pm 20$ nm
Dynamic range (dB) @SNR = 1 & wavelength as applicable	1310 nm: 39 1490 nm: 35 1550 nm: 36 1625 nm: 39
Attenuation dead zone ¹	5 m
Event dead zone ¹	1 m
Pulse width	6, 25, 100, 300, 1000, 3000, 10000, 20000 ns
Distance range	5, 10, 20, 40, 80 120, 160, 240 km
MMF OTDR	KI67xxA-1
λ tolerance	NA
Dynamic range (dB) @SNR = 1 & wavelength as applicable	850 nm: 28 dB 1300 nm: 30 dB
Attenuation dead zone ¹	5 m
Event dead zone ¹	1 m
Pulse width	6, 25, 100, 300, 1000, 3000, 10000, 20000 ns
Distance range	5, 10, 20, 40, 80 120, 160, 240 km

Note 1: at minimum pulse width and reflectance of -45 dB.

OTDR COMMON SPECIFICATIONS

Parameters	Value
Attenuation resolution	0.001 dB
Attenuation measurement linearity	0.05 dB/dB
Distance measurement accuracy	$\pm (0.5 + \text{resolution} + 5 \times 10^{-5} \times L)$ m
Sampling resolution	0.16 ... 7.6 m
Sampling points	up to 128,000

GENERAL SPECIFICATIONS

Parameters	Value
Display	4.3" TFT 16-bit colour touchscreen
Memory	1) 256 MB internal memory 2) USB flash memory stick
Connection with PC	USB, ActiveSync, WMDC
Power supply	Li-Ion Battery 3100mAh (9 hours)
AC/DC power adapter	Input:100~240 V 50~60 Hz AC, Output: 15V 2A DC
Weight	1.5 kg / 3.3 lb.
Dimensions	226 × 149 × 43 mm / 8.9 x 5.9 x 1.7"
Operating temperature	-10 to 50°C / 14 to 122 °F
Storage temperature	-20 to 55°C / -13 to 131 °F
Relative humidity	90% @ 25°C

Technical data is subject to change without notice as part of our program of continuous improvements. Class 1 Laser product, complies IEC60825-1 and 21CFR1040.10

ORDERING INFORMATION

Description	Part number
Instrument, OTDR SMF 1310 / 1550 nm 39 / 36 dB, SC	KI 6701-1
Instrument, OTDR SMF 1310 / 1550 nm 43 / 43 dB, SC	KI 6701A-1
Instrument, OTDR SMF 1310 / 1550 nm & 1625 nm (filtered) 39 / 36 & 39 dB, SC	KI 6702-1
Instrument, OTDR SMF 1310 / 1550 nm & 1625 nm (filtered) 43 / 43 & 39 dB, SC	KI 6702A-1
Instrument, OTDR 50 µm MMF 850 / 1300 nm & SMF 1310/1550 nm 26* / 27* & 38* / 35* dB, SC	KI 6703-1
Instrument, OTDR SMF 1310 nm / 1625 nm (unfiltered) 39 / 37* dB, SC-APC	KI 6708-1-APC

Note*: These Dynamic Ranges of the instrument are slightly lower than that stated in SPECIFICATIONS section.

Please enquire for;

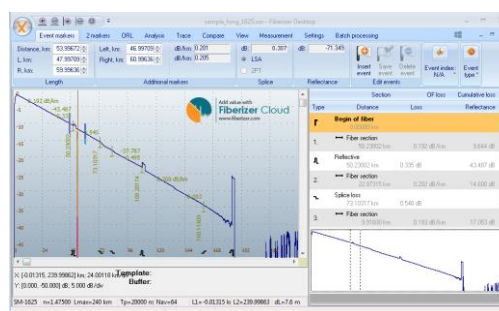
- i. alternative fixed connectors: PC, APC, LC, FC, E2000, ST etc.
- ii. other wavelengths or other specifications.
- iii. models with built-in Light Source, Power Meter or VFL options.

STANDARD ACCESSORIES

Description	Quantity
Soft carry bag	1
Cable, USB	1
Universal AC/DC power adapter with global plug set	1
CD with OTDR processing software	1
Instruction manual	1
QA certificate	1

OTDR PC SOFTWARE (FIBERIZER SOFTWARE)

The PC Reflect Software is fully featured and designed for operating KI 6700 OTDR on a PC. It can be used to view and analysis trace files which were measured by OTDRs, to remote control the OTDR, and to save files. The procedure of connection KI 6700 with a PC is described in the user manual supplied together with the device. FIBERIZER Software works on Windows™ XP/Vista/7/10 (x86/x64) operating systems.



AUTHORIZED DEALER