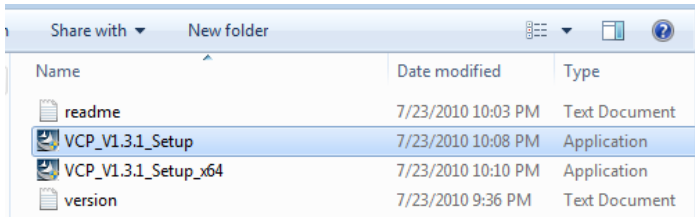

KI6500 / T6500 Series Data Manager Software User Manual

CONTENTS

1. Installation of USB Virtual COM Port driver software	2
2. Installation of Data Manager Software	2
3. Connecting instrument to a PC	4
4. Starting Data Manager Software	5
5. Data Management Software Operations	5
5.1 User Interface of Data Manager Software	5
5.2 Options on Command Bar	6
5.2.1 [COM] – manual USB COM port selection	6
5.2.2 [Connect] – connect instrument to Data Manager Software ...	6
5.2.3 [Get Data] – display data record files saved in instrument	7
5.2.4 [Save Data] – save data in instrument to PC	8
5.2.5 [Graph Data] – display data in graphical format	9
5.2.6 [Setting] – wavelength/frequency data viewing option	9
5.3 Options on Menu Bar	10
5.3.1 Options under [File]	10
5.3.2 Options under [Device]	10
5.3.3 Options under [Data]	11
5.3.4 Options under [Setting]	11
5.3.5 Option under [Help]	11

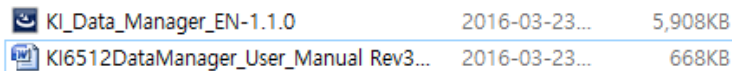
1. Installation of USB Virtual COM Port driver software

Select and double click to execute the file, “VCP_V1.3.1_Setup” in the provided CD, see picture below. Follow instructions prompted on PC to complete the installation.





2. Installation of Data Manager Software

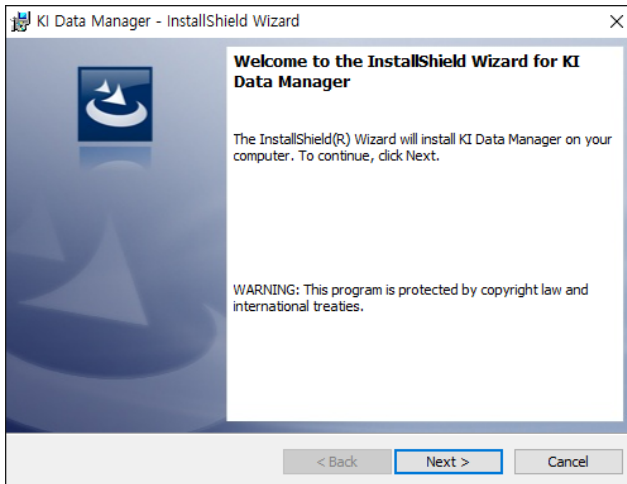
Select and double click to execute the file, KI_DataManager_ENx.x.x.exe in CD provided.



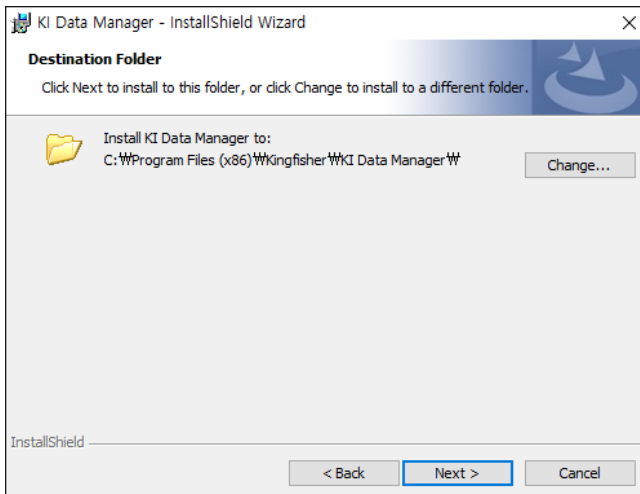
The image shows a file list with two entries. The second entry is highlighted.

 KI_Data_Manager_EN-1.1.0	2016-03-23...	5,908KB
 KI6512DataManager_User_Manual Rev3...	2016-03-23...	668KB

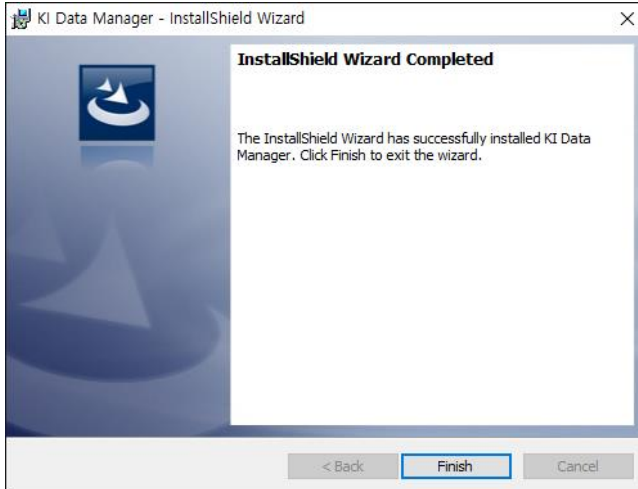
Alternatively, download the file KI65xx Data Manager (zip) from Kingfisher’s website following by executing the relevant unzipped exe file.



Click on [Next] to continue.



Click on [Next] to install program in the default directory or click on [Change] to change specify another directory.

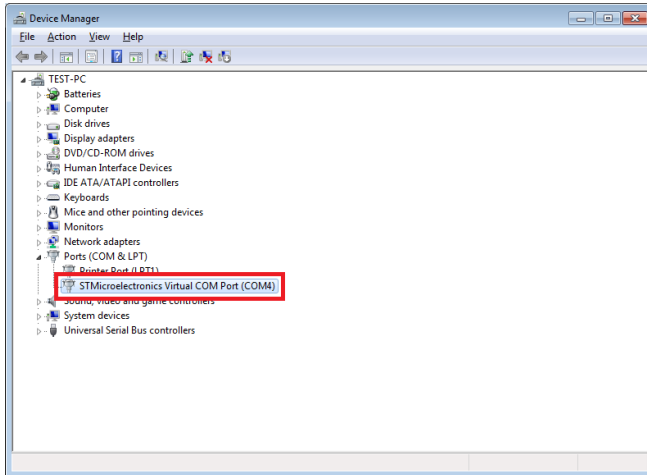


Click on [Finish] to complete program installation.

3. Connecting instrument to a PC

Connect the instrument to PC using the supplied USB cable and switch on instrument.

The installed USB COM Port driver (STMicroelectronics Virtual COM Port) installed on PC can be viewed by the PC's Device Manager as shown below.



4. Starting Data Manager Software

Double click on the file, “KI_DataManager_ENx.x.x.exe” in the PC directory where the software was installed.

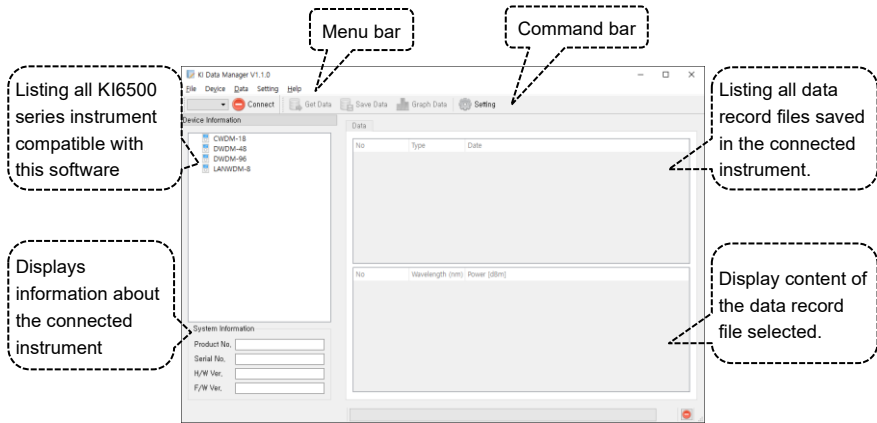
Alternatively, launch the software by double clicking on icon,



5. Data Management Software Operations

5.1 User Interface of Data Manager Software

Picture below shows an introduction of the user interface of Data Manager Software.



5.2 Options on Command Bar

5.2.1 [COM] – manual USB COM port selection

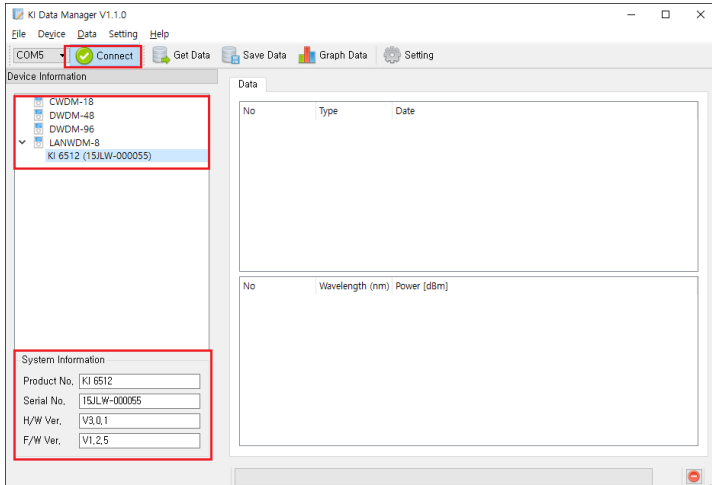
The USB virtual COM port should have been selected automatically when the software starts. If this is not the case, click this command to manually select the appropriate port number. Refer to section 3 to find out which COM port to select. “COM4” should be selected in the example shown in section 3.

5.2.2 [Connect] – connect instrument to Data Manager Software

Click this command to connect instrument to PC. Upon successful connection, the software will automatically identify the model of the connected instrument and, prompt a sign “v” beside that instrument’s model code listed on “Device Information” window, e.g. “LANWDM-8” as shown in picture below.

If you click on the sign “v”, the connected instrument model number

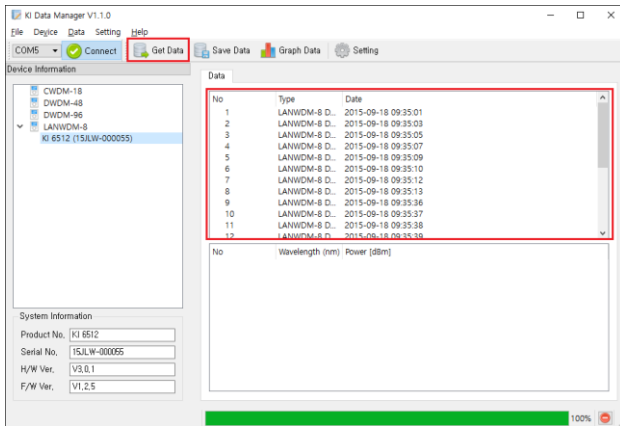
will be displayed. If you click on that instrument model number, information about the connected instrument will be displayed on the “System Information” window, e.g. KI6512 as shown in picture below.



5.2.3 [Get Data] – display data record files saved in instrument

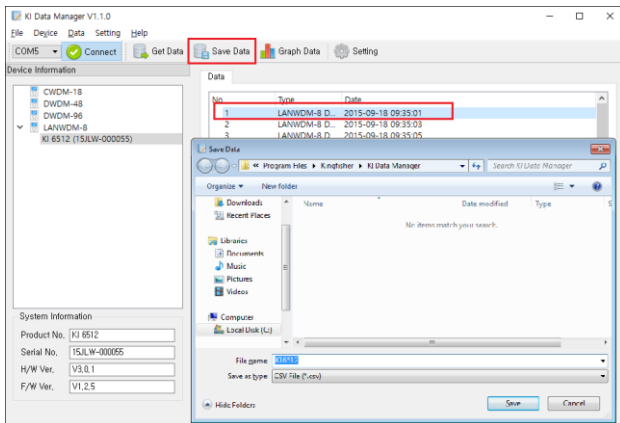
Click this command to list on the “Data” window, all data record files which have been saved in the internal memories of the connected instrument, see picture below for example.

Click on one of these listed data record files will display its content on the window below the list.



5.2.4 [Save Data] – save data in instrument to PC

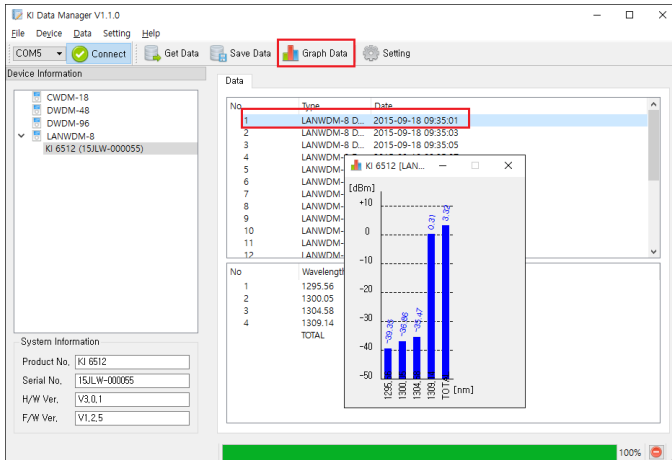
To save a data record file onto PC, click on this command and, follow the subsequent prompted instructions to complete the process.



Default directory for file saving: in the same directory in which the Data Manager Software is installed. The data record file is saved in PC in CSV format.

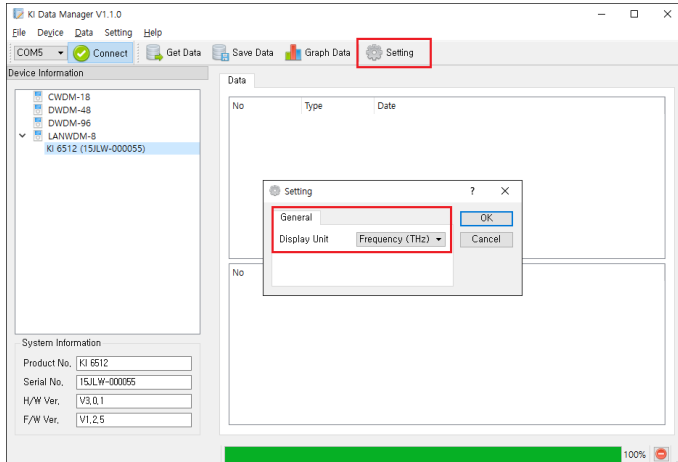
5.2.5 [Graph Data] – display data in graphical format

Select a saved data record file from the displayed list and, click on [Graph Data] to view data in graphical form.



5.2.6 [Setting] – wavelength/frequency data viewing option

Use this command to select the option to display data content of a saved data file in either wavelength (nm) or frequency (THz).



5.3 Options on Menu Bar

5.3.1 Options under [File]

[Open]: Open a CSV data record file which had been saved in PC.

[Save]: Save a selected data record file onto PC, same function as [Save Data] command in section 4.2.

[Exit]: Exit Data Manager Software.

5.3.2 Options under [Device]

[Connect]: This has the same function as [Connect] in section 4.2.

5.3.3 Options under [Data]

[Get Data]: This has the same function as [Get Data] in section 4.2.

[Save Data]: This has the same function as [Save Data] in section 4.2.

[Graph Data]: This has the same function as [Graph Data] in section 4.2.

5.3.4 Options under [Setting]

[Setting]: This has the same function as Setting in section 4.2.

5.3.5 Option under [Help]

[About]: shows information about the software.